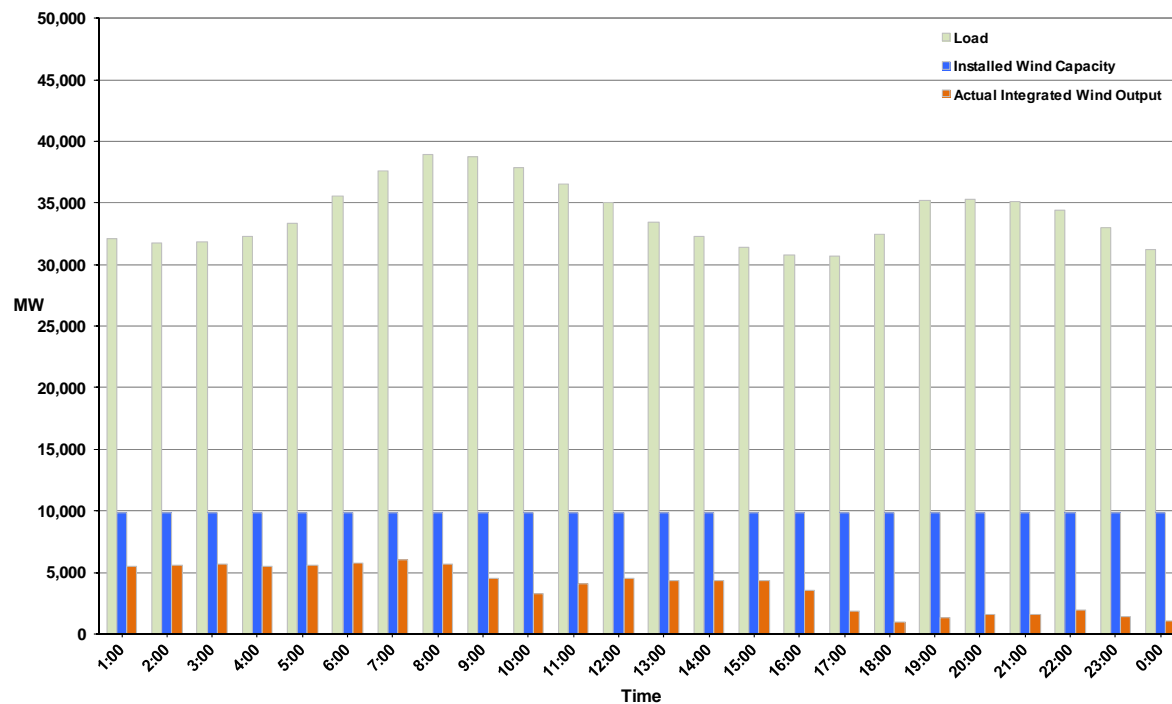




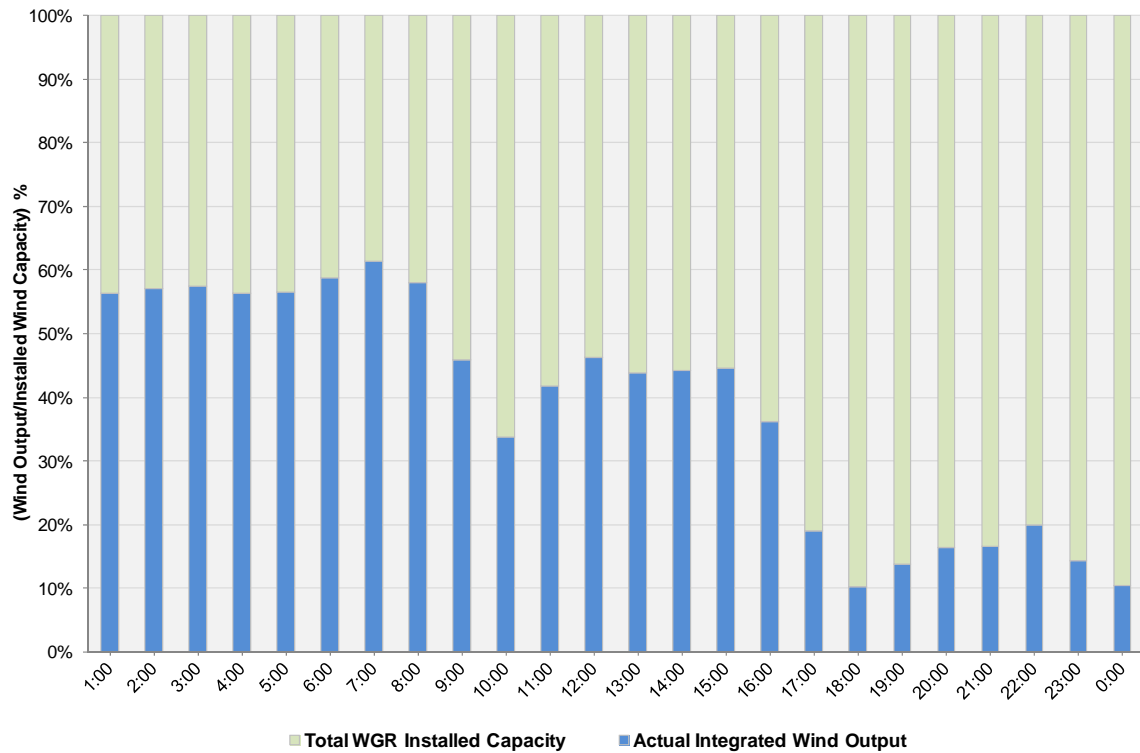
## ERCOT Grid Operations Wind Integration Report: 12/28/11

Peak Load	<b>38,964 MW</b>
Load Peak Hour (HE)	<b>08</b>
Wind over Peak	<b>5,692 MW</b>
Wind Record 10/07/11	<b>7,400 MW</b>
Max Wind Value	<b>6,128 MW</b>
Wind Peak Time	<b>06:16</b>
Wind Integration %	<b>16.48%</b>

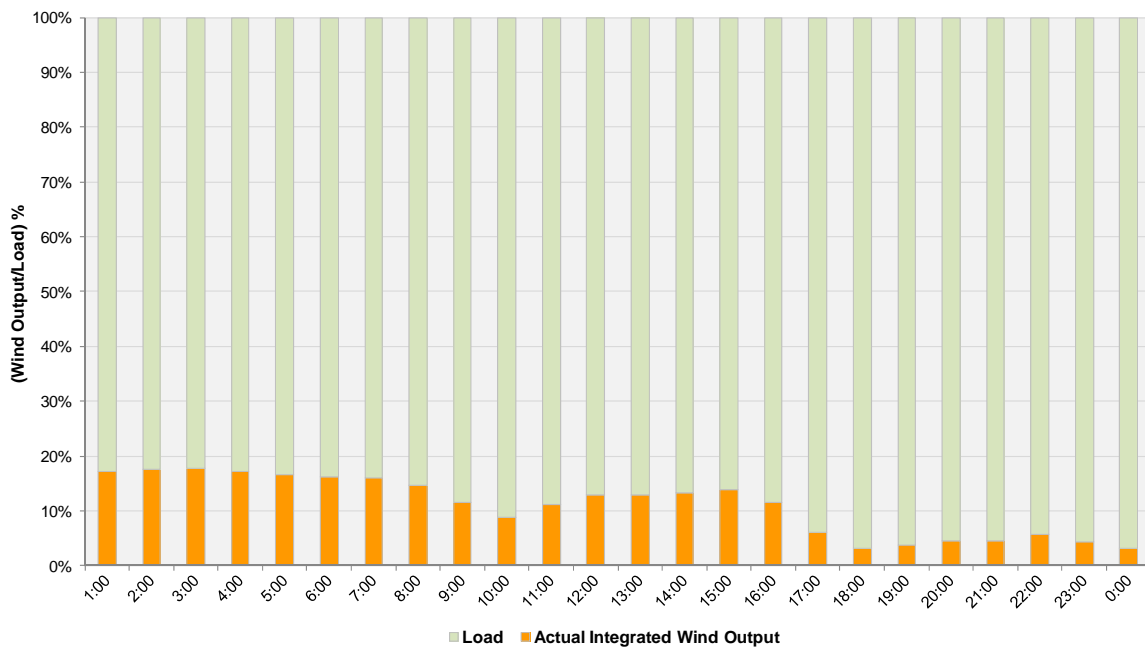
**Hourly Average Actual Load vs. Actual Wind Output  
12-28-2011**



**Actual Wind Output as a Percentage of the Total Installed Wind Capacity**  
**12-28-2011**



**Actual Wind Output as a Percentage of the ERCOT Load**  
**12-28-2011**



ERCOT Load vs. Actual Wind Output 12/21/2011 - 12/28/2011

